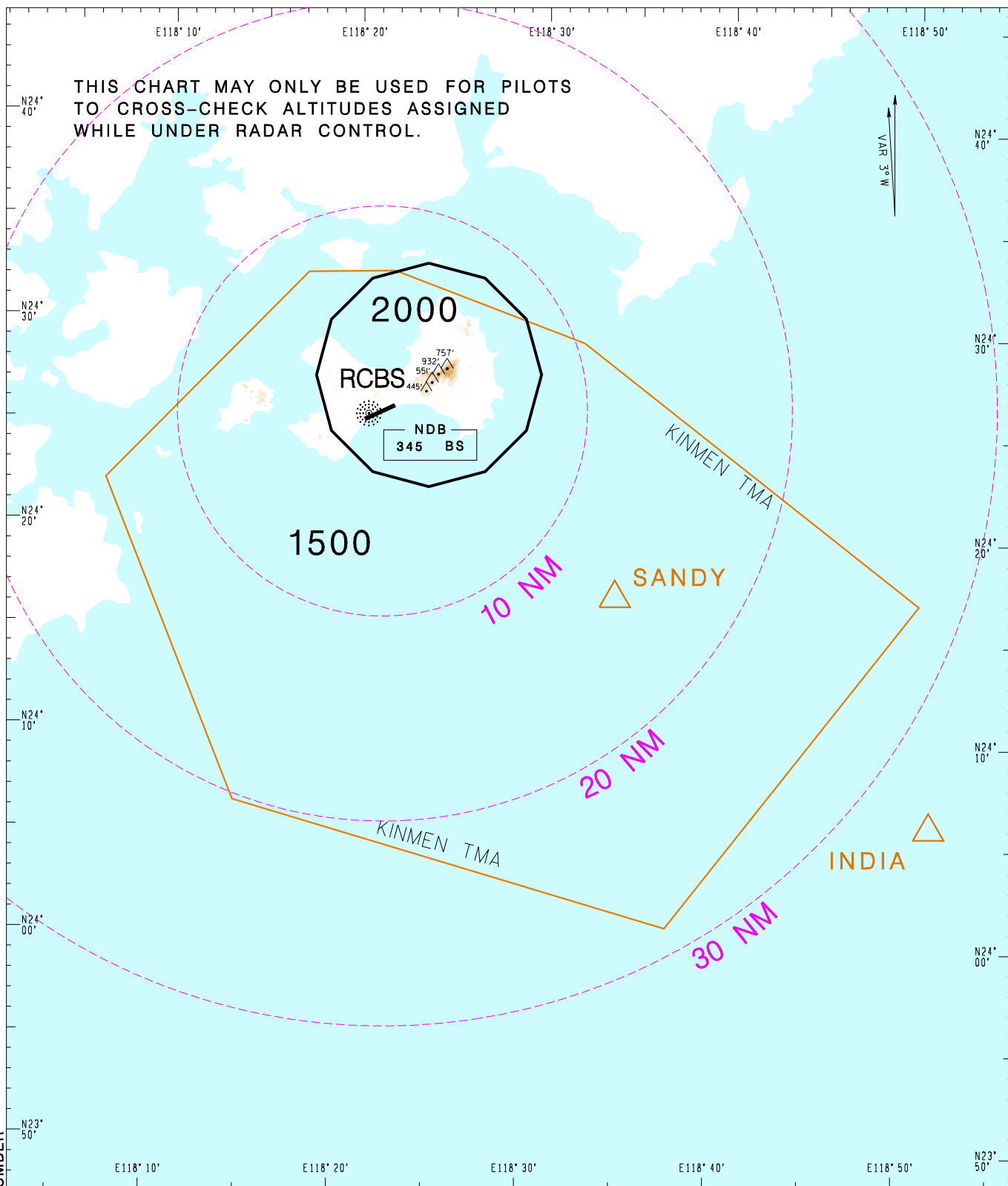


航管監視最低高度圖  
ATC Surveillance  
Minimum Altitude Chart

AD ELEV.  
RCBS 70 FT

|      |       |       |
|------|-------|-------|
| TWR  | 118.0 | 126.2 |
| APP  | 124.6 | 133.1 |
| ATIS | 127.2 |       |

金門終端管制區域  
Kinmen Terminal  
Control Area



NOTE

1. Range marks are centered at RCBS ARP(242544N 1182140E).
2. Minimum altitudes are calculated taking into account of minimum clearance above terrain/obstacles. Radar control service cannot be provided to aircraft below the applicable minimum. However, aircraft at designated altitude in relevant sector is not assured of radar contact.
3. Altitudes, Levels, Heights are in feet.
4. Only significant spot heights are shown.
5. LOSS OF COMMUNICATION
  - a. SQUAWK 7600 immediately, and
  - b. follow AIP ENR 1.6.4 "Radio Communication Failure Procedures."

Transition level: FL130  
Transition altitude: 11,000ft

CHANGES: NEW PAGE NUMBER